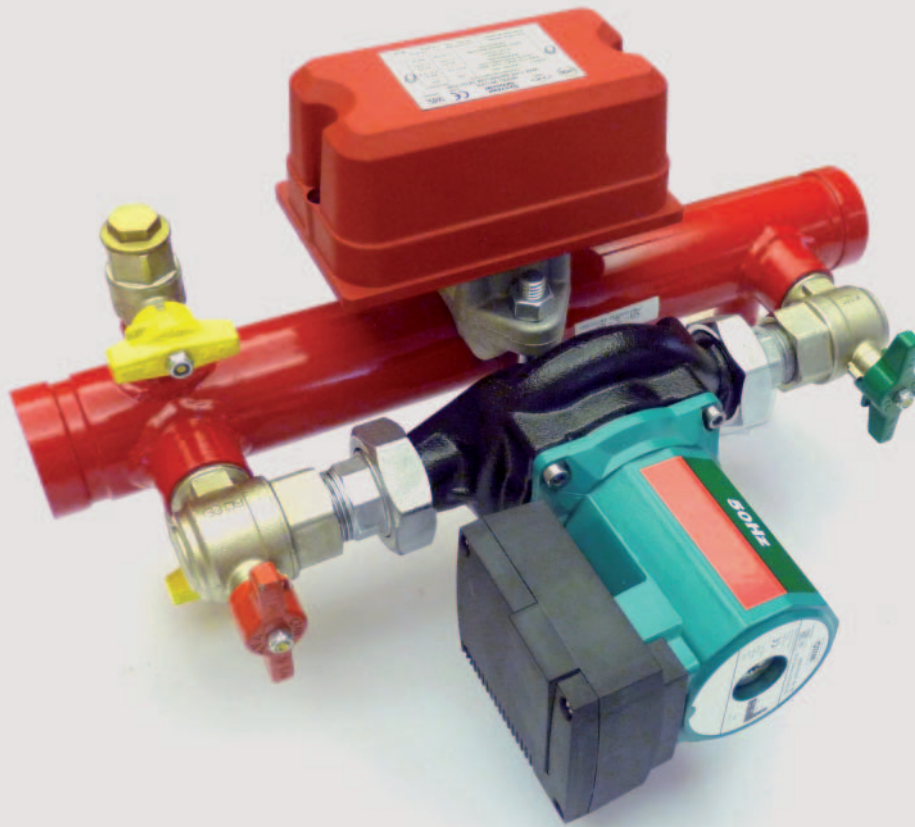
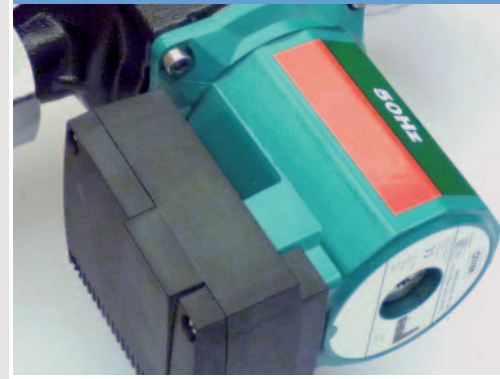


ZONECHECK



Zonecheck

► Product ► Use + Advantages

- ▶ Zonecheck is a device for the fast and functional testing of flow switches. It combines the flow switch and an automatic test system into one unit. Thus, the flow switch can be tested remotely while the sprinkler system remains ready for operation.
- ▶ The functional test is easily carried out by one person without disturbing the environment and without any use of fresh water. Several flow switches can be activated from one local key switch or from a control panel. The functional test is conducted within 1 minute. The costly efforts made for the prescribed quarterly test of the flow switches will no longer arise.
- ▶ Zonecheck is easily installed to the sprinkler pipework. The test system is delivered pre-assembled and available left or right handed, depending on the available space.

The installation of a zonecheck is reasonable wherever flow switches are required, especially in

- ▶ Sprinkler wet systems for life safety protection according to VdS/CEA 4001, e.g. in theatres
 - ▶ Sprinkler wet systems for multi-storey and high-rise buildings according to VdS/CEA 4001
 - ▶ Complex sprinkler pipeworks
- Zonecheck retrofit kit is available for existing systems already including flow switches

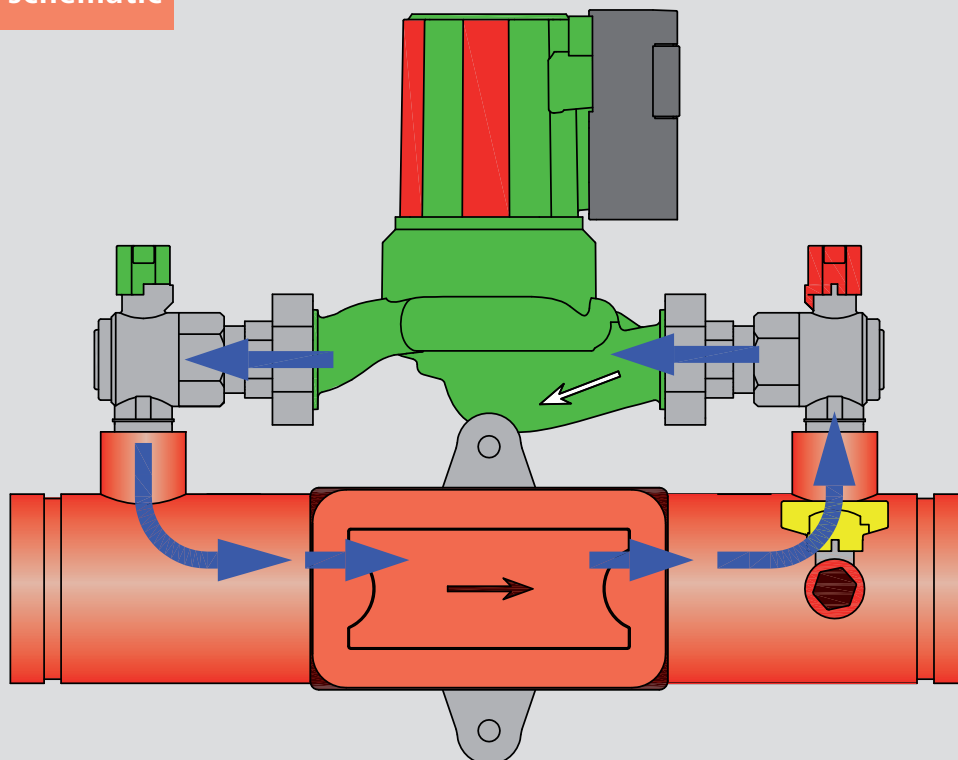
*Cool down.
Fire Protection by*

MINIMAX

- + Simplified routine testing from a central location
- + Test time maximum 1 minute
- + Possibility of simultaneously testing of several flow switches
- + Year on year cost savings
- + Functional test without operating the sprinkler fire pump
- + Closed water circulation without consumption of fresh water
- + No corrosion development because no introduction of fresh water with a high oxygen content is brought into the sprinkler pipework
- + Optional enhancement of the activation and identification of Zonecheck with MX loop technology



* Approvals related to DN50 to DN150



Function

- ▶ When switching on a Zonecheck water in the system is pumped around the flow switch in circular movement, to simulate the release of water similar to one sprinkler head in operation. A light at the key switch or at the control panel verifies the activation of the flow switch.

Items delivered

- ▶ **Zonecheck**
Flow switch with grooved pipe length painted with red lacquer. Automatic testing device with pump, completely assembled
- ▶ **Zonecheck Retrofit kit**
Automatic testing device with pump, spot-drilled clips
- ▶ Key switch or control panel to be ordered separately

Technical data

Maximum operating pressure:
12 bar (175 PSI)

Temperature range:
5 °C to 50 °C (40 to 120 °F)

Pump:
Operating voltage 1~230 V, 50 Hz
Full-load current 0.93 A
Power rating (P1) 195 W
Protection type IP44

Flow switch:
Contact rating 10 A at 125/230 VAC;
2.5 A at 24 VDC

IP rating IP54
Triggering flow rate 30-57 l/min
Delay time 0-30 sek

Nominal width	Zonecheck 450			Zonecheck 450 Retrofit		
	Length* mm	Width* mm	Height* mm	Length* mm	Width* mm	Height* mm
DN 50	450	317	265	307	128	394
DN 65	450	325	282	321	146	394
DN 80	450	338	295	332	160	388
DN 100	450	371	320	359	190	388
DN 150	450	421	375	432	256	414
DN 200	450	480	435	500	327	422

* Over-all dimensions

Detailed information can be found in the appropriate technical data sheets.

Subject to technical alterations.



Distributør av Minimax
systemer og produkter i Norge

Maxitech.no kontakt@maxitech.no